



INTEGRAL
HEALTH SOLUTIONS

carebed.me

*A simple technology
solution transforming
health, care and value*



carebed.me

*“Connecting care practitioners,
patients & their families with health
and social care beds”*

We make healthcare systems work in harmony



We have a national crisis in bed availability.

- Between quarter 2 in 2010/11 and quarter 2 in 2016/17, the number of overnight beds fell by 14,000 across England
- Over the same period, the number of mental health beds fell by a fifth. Pressures within Mental Health services are particularly acute
- In 2000, we had an average of 3.78 beds per 1000 people. By 2016, this dropped to 2.35 beds

Source: BMA 'State of the health system – beds in the NHS' 2017.

- Demand for beds is rising, but the number of beds is falling across the UK
- Demand for beds peak at different times of the day, week and year
- Occupancy level varies between different healthcare settings
- Patients are juggled between beds – this can be detrimental to their care
- Pressures within mental health services are particularly acute

Real-time clinical tool to identify beds :

- when they are needed
- in the right care setting
- for the right patient
- of the correct duration

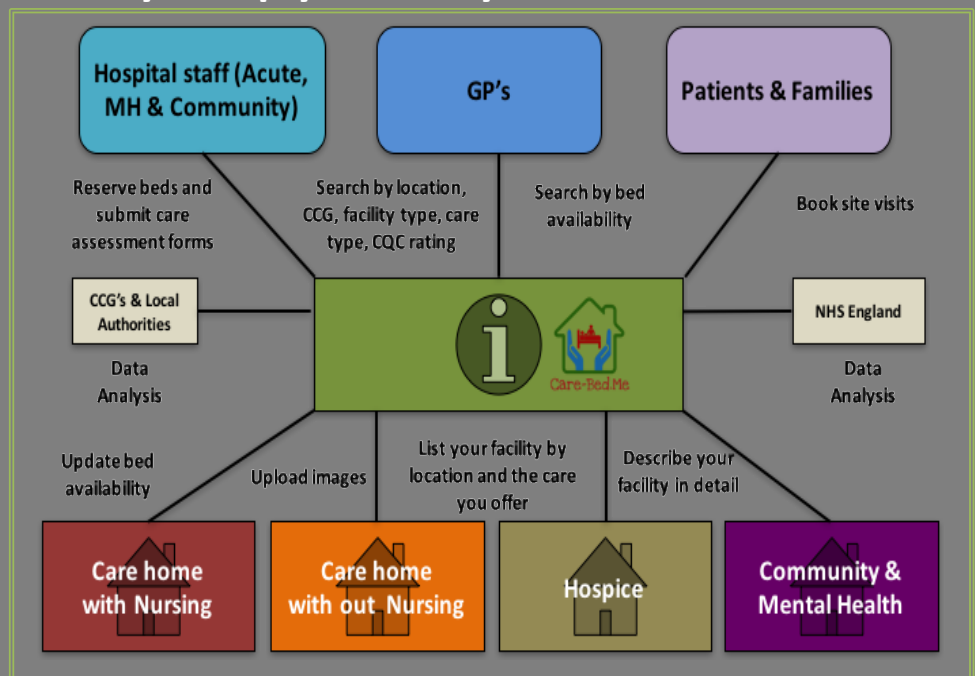


carebed.me



Quickly. Simply. Reliably.

“Simple technology solution connecting care practitioners, patients & their families with health and social care beds”



For further information on Carebed.me, please contact:

Email: hilary.heywood@integralhealthsolutions.co.uk

Phone: Hilary Heywood +44(0)7717 467 483

Phil Heywood +44 (0)7789 504 000

Website: www.integralhealthsolutions.co.uk

© Integral Health Solutions 2018

